

Innovative Hose Tube Assemblies

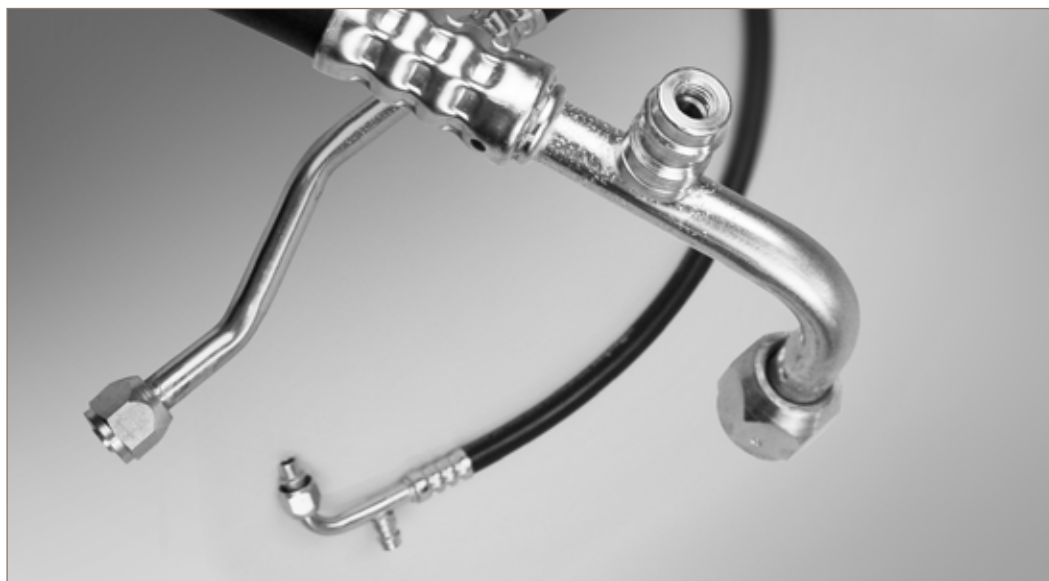
Specifically engineered for air conditioning lines



Create Assemblies that Offer a Wide Range of Connections with Unprecedented Performance

Having problems finding replacement A/C hose assemblies? Many facilities have the ability to make custom A/C repair hose tube assemblies, but given the potential variance with hoses, components, crimping designs and techniques such assemblies might be prone to leaking. Waiting to order the replacement part can cause significant equipment downtime or vehicle operator discomfort. In some cases, only one end of the hose assembly may be damaged. Having the ability to repair the existing assembly with the correct components can be both a time and cost saver. If worn-out or damaged hoses need replacement, you can build a new custom hose assembly immediately restoring the quality performance of your air conditioning system as well as preventing any further harm.

Hose Products Division prides itself on delivering exceptional quality and reliability when it comes to hose and air conditioning components. Making high-quality hose assemblies can be fast, easy, and cost-effective with Parker's industry-leading line of crimpers and equipment. With industry-leading features, Parker's 285 hose was designed specifically for the rigorous requirements



of automotive, mobile, bus and transit applications. This air conditioning hose has long service life, resists moisture ingress and minimizes refrigerant permeation due to a nylon barrier. Furthermore, Parker offers male and female end tube connections with or without a pilot as well as our 26 series for hose connections. Utilizing both of these types of fittings as well as our industry specific hose will give you the ability to make your own custom hose tube assembly for air conditioner applications.

In addition to offering the parts needed to make custom assemblies, ParkerStores offer custom-made hose tube assemblies for A/C repair. Prompt, efficient, profes-

sional in-store services while you wait. ParkerStores have everything for repair, replacement or preventive maintenance on hydraulic, pneumatic, air conditioning and refrigeration systems including tube and pipe bending capabilities.

Contact Information

Parker Hannifin Corporation
Hose Products Division
30240 Lakeland Blvd.
Wickliffe, OH 44092

phone: 440 943 5700
hpdsales@parker.com

www.parkerhose.com



ENGINEERING YOUR SUCCESS.

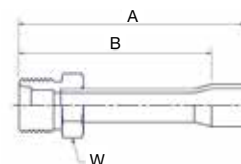
PART NUMBER	HOSE I.D.		HOSE O.D.		WORKING PRESSURE		MINIMUM BEND RADIUS		VACUUM RATING		PARKRIMP
	in	mm	in	mm	psi	MPa	in	mm	inches of Hg	kPa	
285-4	3/16	5,1	0.49	11,7	500	3,4	1	25	28	95	•
285-6	5/16	8,1	0.62	15,7	500	3,4	1-1/2	38	28	95	•
285-8	13/32	10,7	0.74	18,8	500	3,4	2	51	28	95	•
285-10	1/2	13	0.83	21,1	500	3,4	2-1/2	64	28	95	•
285-12	5/8	16,1	0.96	24,4	500	3,4	3	76	28	95	•



Application: Refrigerant 134a
Inner Tube: Synthetic rubber with nylon barrier
Reinforcement: One fiber braid
Temp. Range: -22°F to +257°F
 (-30°C to +125°C)

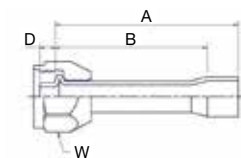
PART NUMBER	THREAD in		A		W	B	
			in	mm	in	in	mm
14GZ-6-6	3/8	5/8 -18	4.0	101.6	5/8	3.62	92.0
14GZ-8-8	1/2	3/4 -16	4.0	101.6	3/4	3.62	92.0
14GZ-10-10	5/8	7/8 -14	4.0	101.6	7/8	3.62	92.0

Male Insert O-ring
Braze Nut



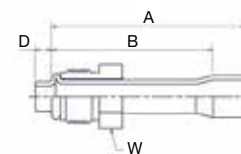
PART NUMBER	THREAD in		A		D		W	B	
			in	mm	in	mm	in	in	mm
5SGZ-6-6	3/8	5/8 -18	4.0	101.6	0.18	4.7	3/4	3.62	92.0
5SGZ-8-8	1/2	3/4 -16	4.0	101.6	0.18	4.7	7/8	3.62	92.0
5SGZ-10-10	5/8	7/8 -14	4.0	101.6	0.18	4.7	1 1/16	3.62	92.0

Female Tube-O –
Swivel – Short Pilot



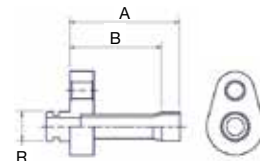
PART NUMBER	THREAD in		A		D		W	B	
			in	mm	in	mm	in	in	m
S5GZ-6-6	3/8	5/8 -18	4.0	101.6	0.18	4.7	5/8	3.62	92.0
S5GZ-8-8	1/2	3/4 -18	4.0	101.6	0.18	4.7	3/4	3.62	92.0
S5GZ-10-10	5/8	7/8 -18	4.0	101.6	0.18	4.7	7/8	3.62	92.0

Male Tube-O –
Swivel – Short Pilot



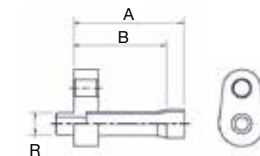
PART NUMBER	A		R		B	
	in	mm	in	mm	in	mm
ZJGZ-8-8	4.0	101.6	0.606	15.4	3.62	92.0

Male "C" Plate Seal /
O-ring Block



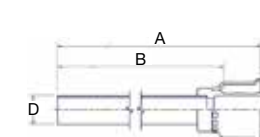
PART NUMBER	A		R		B	
	in	mm	in	mm	in	mm
ZKGZ-8-8	4.0	101.6	0.459	11.65	3.62	92.0

Male Encapsulated
Slimline Seal Block



PART NUMBER	HOSE I.D. in		A		D		B	
	in	mm	in	mm	in	mm	in	mm
1ZG26-6-6	5/16	-6	25.8	654	3/8	9.5	24	609
1ZG26-8-8	13/32	-8	25.8	654	1/2	12.7	24	609
1ZG26-10-10	1/2	-10	25.8	654	5/8	15.9	24	609

Tube with 26 Series
Coupling



PART NUMBER	HOSE I.D. in	A		D		CHARGE PORT	B		PRESSURE
		in	mm	in	mm		in	mm	
1ZG26-6-6-PB	5/16	-6	25.8	654	3/8	9.5	368014	24	609
1ZG26-10-10-PT	1/2	-10	25.8	654	5/8	15.9	737826	24	609

Tube with 26 Series
Coupling and
Charge Port

