



The NSP are dry-break couplings with flat face valves. The compact design make them suitable for reduced spaces. Coupling system with single-hand operation.

No spillage during connection/disconnection. Push to connect function. Low pressure drop. Specific design for cooling applications. Can be used either with water and heat transfer oils. Excellent resistance to vibrations and mechanical stresses.

Working Temperature*

-20°C up to +200°C (FKM)
depending on the medium.

* For temperatures below -20°C and over +200°C and depending on the medium, other seal variants (NBR, EPDM, FFKM) are available.

**Working Pressure****

60 bar

** maximum static working pressure with safety factor 4 to 1.

Material

Coupling: Brass/Stainless Steel

Plug: Brass/Stainless Steel

Seals: FKM

Technical Description

Dead space volume DN 6: 0,01 ml

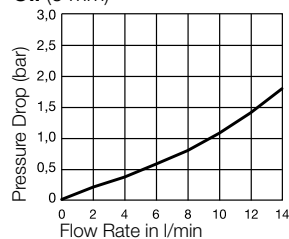
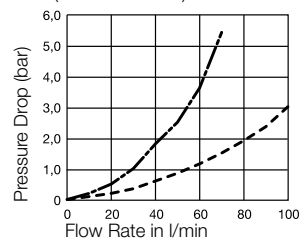
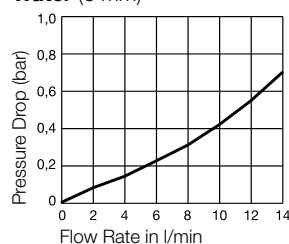
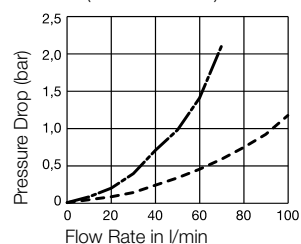
Dead space volume DN 9: 0,04 ml

Dead space volume DN 12: 0,1 ml

Connecting Force 0 bar DN 6: 110 N

Connecting Force 0 bar DN 9: 95 N

Connecting Force 0 bar DN 12: 195 N

Flow diagrams**Oil (6 mm)****Oil (9 and 12 mm)****Water (6 mm)****Water (9 and 12 mm)**

— DN 6 mm
 - - - DN 9 mm
 - - - DN 12 mm



Couplings – flat sealing

Series NSP

| | DN | Connection A | HEX mm | L mm | D mm | Part Number |
|----------------------|----|--------------|--------|------|------|----------------------------|
| <p>Male Thread</p> | 6 | G 1/4 | 21 | 51,7 | 22 | NSP-251-4MBE ¹ |
| | 6 | M 16 x 1,5 | 20 | 44,8 | 22 | NSP-251-16MCL ² |
| | 9 | G 3/8 | 27 | 63 | 30 | NSP-371-6MBO |
| | 12 | G 1/2 | 35 | 90,4 | 42 | NSP-501-8MBO |
| <p>Female Thread</p> | 6 | G 1/4 | 20 | 57,9 | 22 | NSP-251-4FB |
| | 9 | G 3/8 | 27 | 72 | 30 | NSP-371-6FB |
| | 12 | G 1/2 | 35 | 99,4 | 42 | NSP-501-8FB |
| <p>Hose Barb</p> | 6 | 10 mm | 20 | 55,2 | 22 | NSP-251-6PL |
| | | | | | | |



Plugs – flat sealing

Series NSI

| | DN | Connection A | HEX mm | L mm | D mm | Part Number |
|--------------------|----|--------------|--------|------|------|---------------------------|
| <p>Male Thread</p> | 6 | G 1/4 | 19 | 44 | | NSI-252-4MBE ¹ |
| | 9 | G 3/8 | 24 | 60,2 | | NSI-372-6MBO |
| | 12 | G 1/2 | 32 | 79,1 | | NSI-502-8MBO |
| | | | | | | |

¹ End connection according to ISO1179-2 ED seal

² End connection according to DIN 2353 24°cone