

MV-6 Manual Ball Valve

Product Overview

The MV-6 PTFE Ball Valves are designed for use in high purity semiconductor applications, and are also ideally suited for use in ultra-pure water and aggressive chemicals. All sizes have wetted parts made entirely of PTFE. All valves are designed full port for minimal flow restrictions and are operated 1/4 turn with minimal torque.



Features

Floating ball design without o-rings ensures bubble tight sealing at high pressure.

Full port design; 1/4 turn operation with low torque tee handle.

Panel mounting is an option on all sizes.

Benefits

Bidirectional flow to 120 psi liquid or gas; High cycle life.

Ideal for quick shut-off in contamination-free applications.

Ideal for process instrumentation applications.

Specifications

Materials of Construction

Wetted: PTFE
Non-wetted: HDPE, PVDF and PVC

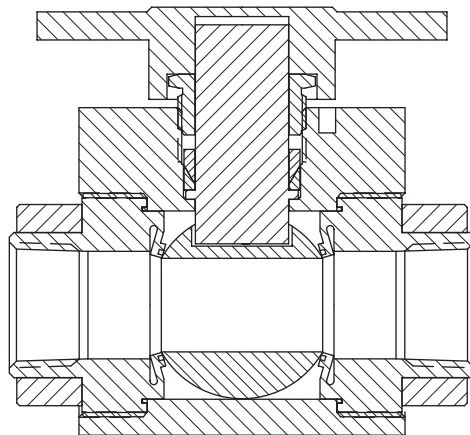
Pressure Ranges

25" HG vacuum (846 mbar) to 120 PSIG (8.3 bar)

Pressure ranges for operation at ambient temperatures. For use at higher temperatures consult Pressure/Temperature chart on page 3.

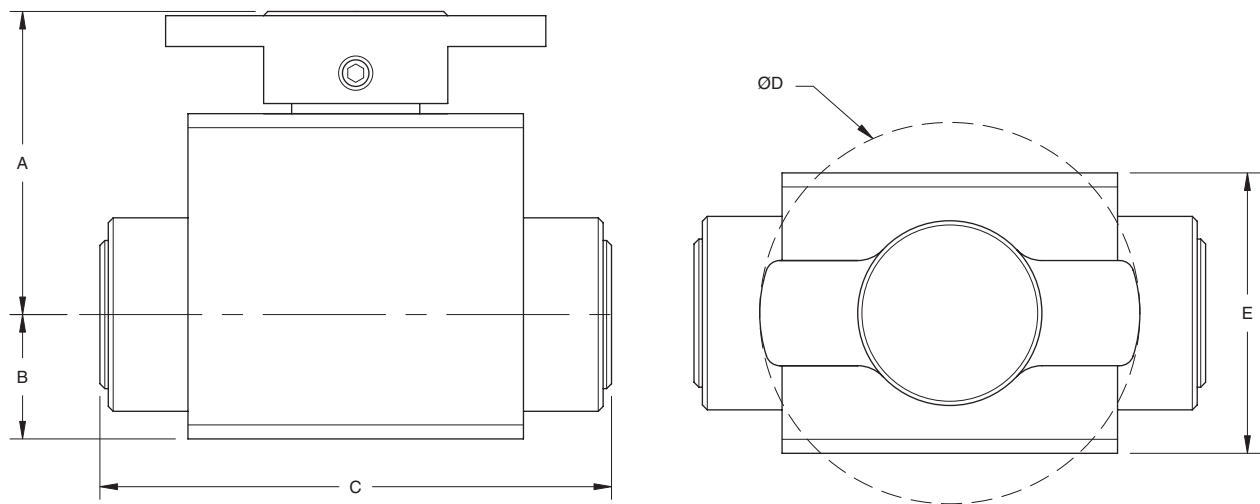
Temperature Ranges

Ambient: -60° - 176° F (-51° - 80° C)
Fluid: -60° - 400° F (-51° - 204° C)



MV-6 Manual Ball Valve

BRACKETED DIMENSIONS
ARE IN mm.



Model Number	Cv	Kv	Flow Config.	Port Config.	Dimensions in [mm]				
					A	B	C	D	E
MV-6-1414-0	1.88	26.81	ON/OFF	1/4" FNPT	1.73 [43.94]	.66 [16.76]	2.91 [73.91]	Ø 1.98 [50.29]	1.31 [33.27]
MV-6-1818-0	6.59	93.97		1/2" FNPT	2.24 [56.89]	.89 [22.60]	3.72 [94.49]	Ø 2.72 [69.08]	2.00 [50.80]
MV-6-116116-0	28.06	400.14		1" FNPT	3.18 [80.77]	1.39 [35.30]	5.00 [127.00]	Ø 4.40 [111.76]	2.53 [64.26]

